






76 Gepp Pde Derwent Park TAS

5  3  4 

Overlooking Prince of Wales Bay, with a boat ramp and world class marina at your doorstep, this charming home offers stylish living and all the space you could need with up to 4 bedrooms inside the main house and a separate studio/granny flat, all within 7kms of Hobart City.

Type : House

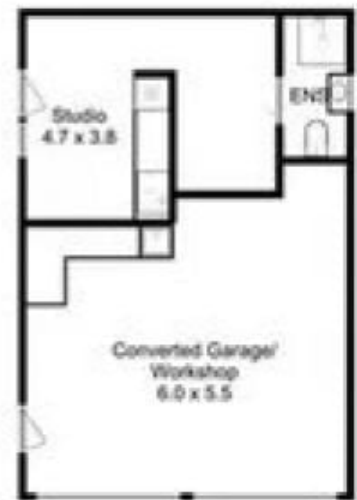
View : <https://www.southernhorizons.com.au/lease/tas/hobart-southern/derwent-park/residential/house/8675807>

This two storey character home has an impressive floorplan, the lower level has a large lounge with wood heater and heat pump, flowing into a secondary living area with double doors leading onto the peaceful undercover deck. The modern kitchen features a sleek design with stone bench tops and a new dishwasher, flowing onto a spacious dining room. There are also 2 good sized bedrooms and the main bathroom is well equipped with a separate bath and shower.



Mary Cooper
0429 582 722

[For full version visit the website](https://www.southernhorizons.com.au)



Total Approximate Living Area : 167 sqm

